

Executive Leadership Contacts



Elizabeth Groginsky
Cabinet Secretary
Email: Elizabeth.Groginsky@eecd.nm.gov
Ph: 505-827-7684



Ali Hedrick
Family Support and Early
Intervention Director
Email: ali.hedrick@eecd.nm.gov
Ph: (505) 469-1742



Lela Wendell
Policy, Research, and Quality
Initiatives Division Director
Email: lela.wendell@eecd.nm.gov
Ph: 505-531-7215



Ariana Quinones-Miranda
Deputy Secretary
Email: ariana.quinones-miranda@eecd.nm.gov
Ph: 505-795-1786



Diana Sandoval-Tapia
Special Projects Coordinator
Email: diana.sandoval-tapia@eecd.nm.gov
Ph:



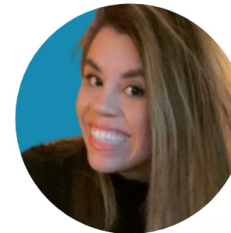
Shelley Strong
General Counsel
Email: shelley.strong@eecd.nm.gov
Ph: 505-670-3779



Sandeep Patel
Chief Information Officer
Email: sandeep.patel@eecd.nm.gov
Ph: 505-660-8758



Helen Quintana
Human Resources and
Constituent Services Director
Email: HelenT.Quintana@eecd.nm.gov
Ph: 505-660-6975



Sonya Martinez
Acting Communications Director
Email: sonya.martinez@eecd.nm.gov
Ph: 505-670-8338



Sandy Trujillo-Medina
Early Care Education and Nutrition
Division Director
Email: sandy.trujillomedina@eecd.nm.gov
Ph: 505-231-3219

The New Mexico Early Childhood Education and Care Department (ECECD)
Cabinet Secretary Elizabeth Groginsky
elizabeth.groginsky@eeced.nm.gov

Assistant Secretary for Native American Early Childhood Education and Care
Vacant

Deputy Secretary
Ariana Quinones-Miranda
ariana.quinones-miranda@eeced.nm.gov

Chief Information Officer
Sandeep Patel
sandeep.patel@eeced.nm.gov

Division Director Administrative Services
Vacant

Chief General Counsel
Shelley Strong
shelley.strong@eeced.nm.gov

Chief Health Officer
Vacant

Communications Director
Sonya Martinez
sonya.martinez@eeced.nm.gov

Family Support and Early Intervention Division Director
Ali Hedrick
ali.hedrick@eeced.nm.gov

Family Foundations
Families FIRST
Home Visiting

Policy, Research, and Quality Initiatives Division (PRQI)
Lela Wendell
lela.wendell@eeced.nm.gov

Family Infant Toddler (FIT)

Division Director Early Childhood Care and Nutrition Director
Sandy Trujillo-Medina
sandy.trujillomedina@eeced.nm.gov

Child Care Services Bureau (CCSB)
Food Nutrition Bureau (FNB)
NM PreK

Audit and Accounting
Budget and Finance
Human Resources
Facility Management
Contract Management and Procurement Bureau

Comprehensive Addiction and Recovery Act (CARA) Support
Thriving Families
Prevention, Health and Wellness
Family and Community Engagement / Local Early Childhood System Coalitions

Data Assessment and Research
Policy Development
Quality Initiatives and Workforce Development
Head Start State Collaboration Office
Social Emotional and Early Development (SEED) Initiative